

THIS DOCUMENT IS THE PROPERTY OF BOSTON WHALER, INC. MFG. DEPT., EDGEWATER, FLORIDA. ALL RIGHTS ARE RESERVED. THIS DOCUMENT AND INFORMATION CONTAINED MUST NOT BE COPIED OR DISCLOSED TO OTHERS WITHOUT WRITTEN PERMISSION OF BOSTON WHALER, INC.

DWG. NO:
10501

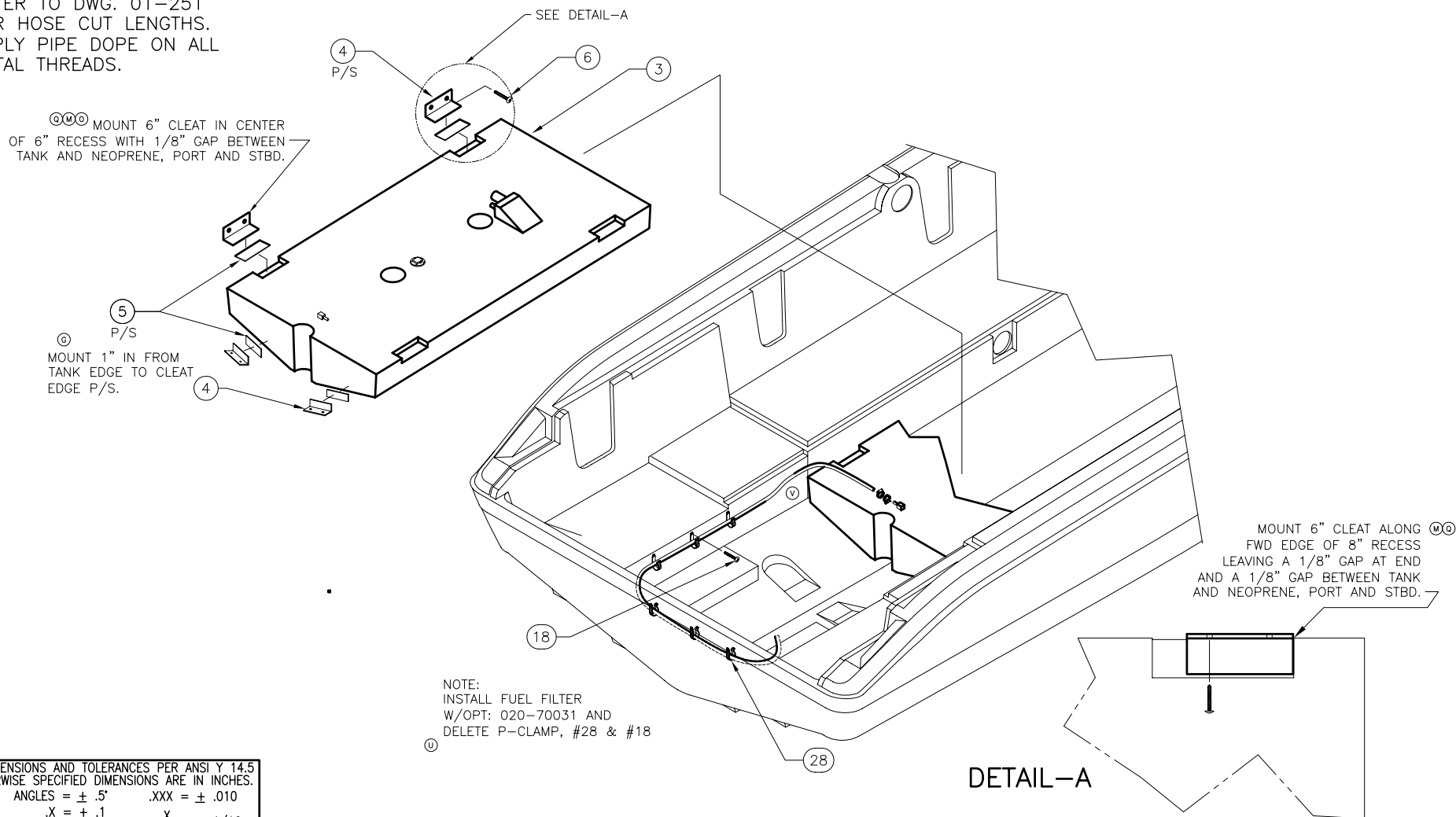
REV.
Y

CURRENT ECD
051227

NOTES:

1. REFER TO DWG.#06-101 FOR ALL HOLE CUTOUTS.
2. FUEL LINES SHALL BE DOUBLED CLAMPED w/CLAMPS POSITIONED AT 180° TO EACH OTHER AS SHOWN.
3. HOSE & LINE ROUTINGS TO COMPLY w/NMMA,USCG, & ABYC STDS. AND REC'S.
4. THE COMPLETED FUEL SYSTEM SHALL BE PRESSURE TESTED IN ACCORDANCE w/ABYC H-24-17.
5. PSI TEST @ 3PSI FOR 6 MINUTES.
6. REFER TO DWG. 01-251 FOR HOSE CUT LENGTHS.
7. APPLY PIPE DOPE ON ALL METAL THREADS.

REVISIONS					
REV.	DESCR.	BY	DATE	APPVD.	ECN NO.
U	MYE 2005: ADDED NOTE TO SHT. 1, #9 WAS 0151076, #20 WAS 1116870, #24 WAS 0152926, #18 QTY. WAS 9, #21 QTY. WAS 8 & #28 QTY. WAS 7	JED	04/27/04	SH	040140
V	MYE 06' DELETE OPT:020-70031	HJR	04/18/05	AD	050355
W	ITEM #10 P/N 1109370 WAS 0996371; ADDED ITEM #30, SHEETS 2 AND 4.	SL	08/22/05	ME	050837
X	MODIFY DRAWING BORDER TO AN ATTRIBUTED BORDER	TS	01/23/06	AVM	060132
Y	CHANGED PN# & DESCRIPTION ITEMS 2 & 15, SHEET 4	SLJ	02/16/06	ME	051227



NOTE:
INSTALL FUEL FILTER
W/OPT: 020-70031 AND
DELETE P-CLAMP, #28 & #18

INTERPRET DIMENSIONS AND TOLERANCES PER ANSI Y 14.5 UNLESS OTHERWISE SPECIFIED DIMENSIONS ARE IN INCHES.
TOLERANCES: ANGLES = ± .5° .XXX = ± .010
.X = ± .1 .XX = ± .03 X = ± 1/16
DO NOT SCALE DRAWING



CHECKED: R. DURHAM	DATE: 11/17/00	DRAWN: R. CRAVEN	DATE: 11/02/00	SCALE: NONE	BOAT MODEL 180DA	MOLD NO.
APPD: J. SIRECI	DATE: 11/17/00	DWG. TITLE: FUEL SYSTEM INSTALLATION			INIT. REL. ECN NO: 2207	DWG. NO: 10501
DESIGN: L. SCHOLZ	DATE: 11/27/00					SHT. NO. 1 OF 4
INT. ENG: R.A.	DATE: 02/21/01					

THIS DOCUMENT IS THE PROPERTY OF BOSTON WHALER, INC. MFG. DEPT., EDGEWATER, FLORIDA. ALL RIGHTS ARE RESERVED. THIS DOCUMENT AND INFORMATION CONTAINED MUST NOT BE COPIED OR DISCLOSED TO OTHERS WITHOUT WRITTEN PERMISSION OF BOSTON WHALER, INC.

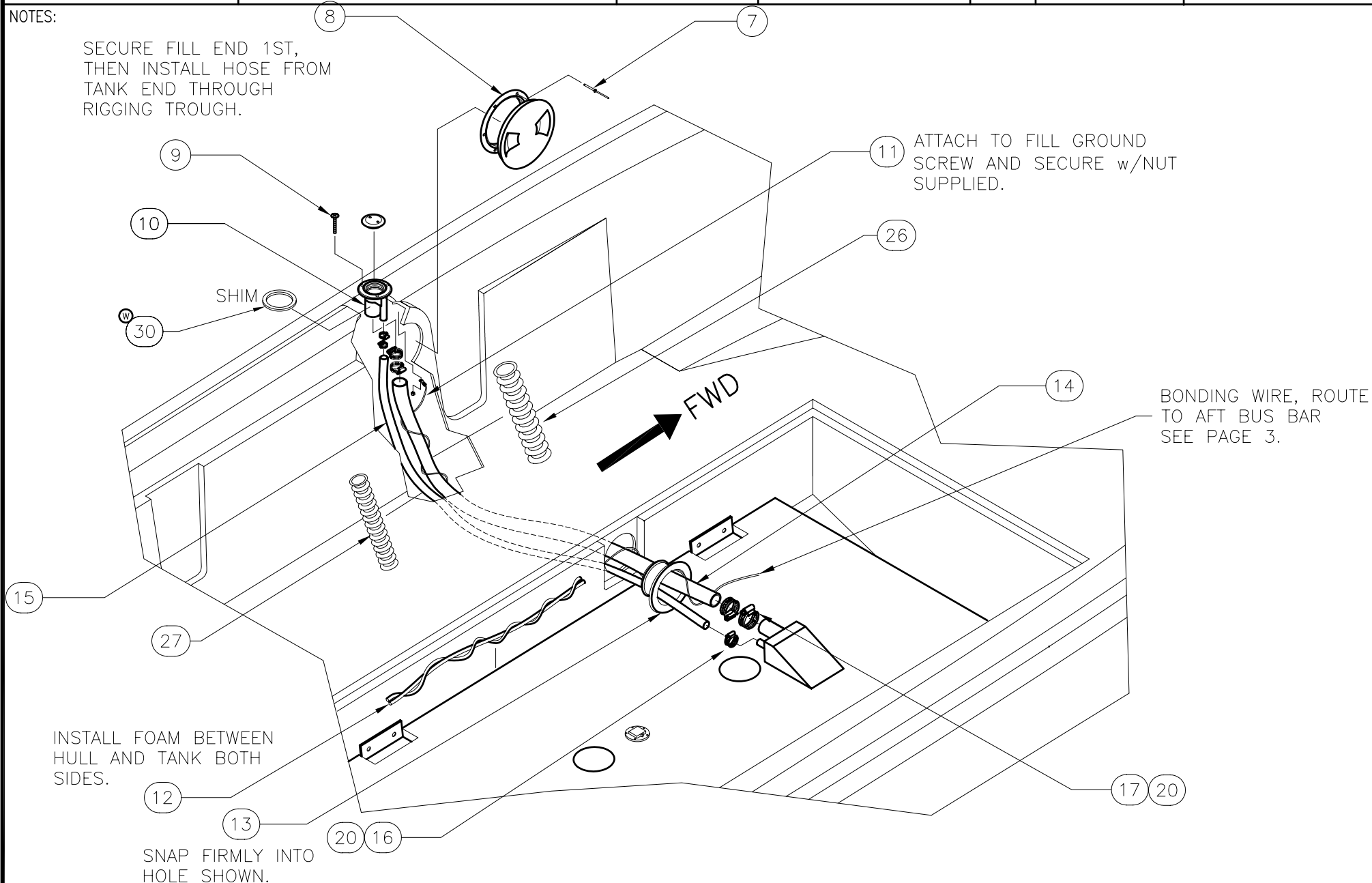
DWG. NO:
10501

REV.
Y

CURRENT ECD
051227

NOTES:

SECURE FILL END 1ST, THEN INSTALL HOSE FROM TANK END THROUGH RIGGING TROUGH.



INTERPRET DIMENSIONS AND TOLERANCES PER ANSI Y 14.5 UNLESS OTHERWISE SPECIFIED DIMENSIONS ARE IN INCHES.
TOLERANCES: ANGLES = ± .5° .XXX = ± .010
.X = ± .1 X = ± 1/16
.XX = ± .03
DO NOT SCALE DRAWING

DRAWN: R. CRAVEN DATE: 11/02/00 SCALE: NONE

DWG. TITLE: FUEL SYSTEM INSTALLATION

BOAT MODEL
180DA

INIT. REL. ECN NO:
2207

MOLD NO.

DWG. NO:
10501

SHT. NO.
2 OF 4

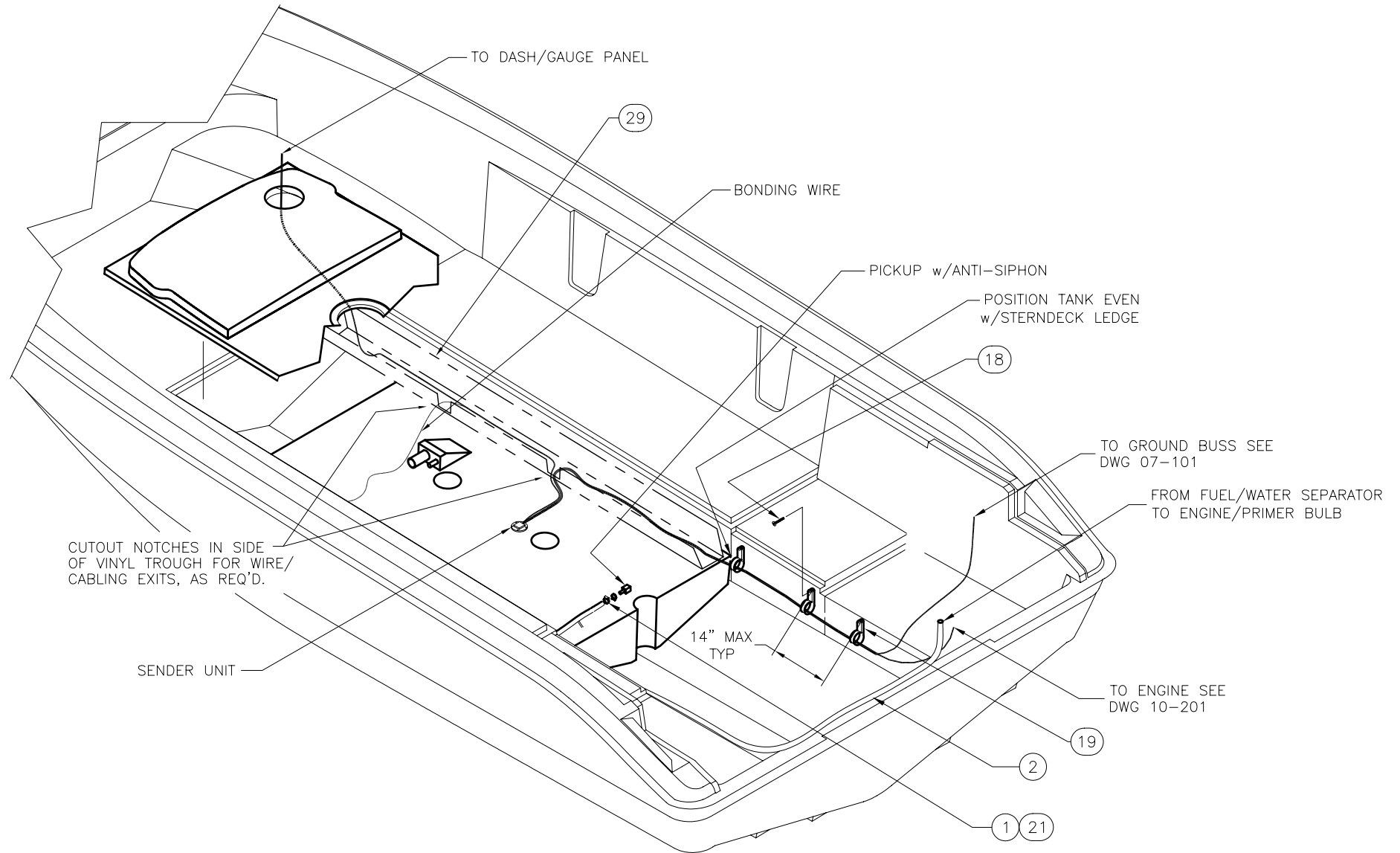
THIS DOCUMENT IS THE PROPERTY OF BOSTON WHALER, INC. MFG. DEPT., EDGEWATER, FLORIDA. ALL RIGHTS ARE RESERVED. THIS DOCUMENT AND INFORMATION CONTAINED MUST NOT BE COPIED OR DISCLOSED TO OTHERS WITHOUT WRITTEN PERMISSION OF BOSTON WHALER, INC.

DWG. NO:
10501

REV.
Y

CURRENT ECD
051227

NOTES:



INTERPRET DIMENSIONS AND TOLERANCES PER ANSI Y 14.5 UNLESS OTHERWISE SPECIFIED DIMENSIONS ARE IN INCHES.
 TOLERANCES: ANGLES = ± .5° .XXX = ± .010
 .X = ± .1 .XX = ± .03 X/X = ± 1/16
 DO NOT SCALE DRAWING

DRAWN: R. CRAVEN DATE: 11/02/00 SCALE: NONE
 DWG. TITLE: FUEL SYSTEM INSTALLATION

BOAT MODEL
180DA

MOLD NO.

INIT. REL. ECN NO:
2207

DWG. NO:
10501

SHT. NO.
3 OF 4

NOTES:

SEE DWG# 01-251
FOR INDIVIDUAL HOSE
LENGTHS

Parts List					
ITEM	QTY	U/M	DESCRIPTION	B.W.I.	NO.
(V)	1	3 EA	CLAMP, HOSE #06M 5/16"-7/8" SS MIN	0123398	
(Y)	2	0 FT.	HOSE, FUEL 3/8" TYPE A CLASS 1 ISO/CE	0123760	
(P)	3	1 EA.	TANK, FUEL - BW 60GAL 180DA/VT-03 W/SS SENDER	1746456	
	4	6 EA.	BRACKET, PVC 2" x 2"x 1/4" x 6"	1547280	
	5	3 FT.	TAPE, FOAM NEOPRENE W/3M 9828 3/8" x 2"	1497452	
	6	12 EA.	SCREW, TAPPING #14A x 1.5" PTH SC	1010909	
	7	6 EA.	RIVET, POP BLIND 3/16" x 5/8" ALUM	0189415	
	8	1 EA.	ACCESS PLATE, POLYPROP TWIST-OUT 5"	1016153	
	9	4 EA.	SCREW, TAPPING #8A X 1" PPH SC	1213115	
(W)(U)	10	1 EA.	DECK PLATE, GAS CHR W/VENT STRAIGHT RED CODE	1109370	
	11	7 FT.	WIRE, 14 GA AWG INSUL TIN/CPR	1000314	
	12	28 FT.	FOAM, BACKER ROD 7/8" DIA	1041698	
	13	1 EA.	GROMMET, VENT HOSE 3" BLK	1580810	
	14	0 FT.	HOSE, FUEL 1.5" TYPE A CLASS 2	0123745	
(Y)	15	0 FT.	HOSE, FUEL 5/8" TYPE A CLASS 1 ISO/CE	0123778	
	16	3 EA.	CLAMP, HOSE #10 1/2"-1 1/8" SS .50	0263954	
	17	4 EA.	CLAMP, HOSE #24 1"-2" SS .505	0256693	
	18	8 EA.	SCREW, TAPPING #8 x 5/8" PPH SC	1010677	
(U)	19	3 EA.	CLIP, SUPPORT 2" DIA	1323427	
	20	7 EA.	COVER, CLAMP END PROT 1/2"L X .045"X .465"RED	0830968	
(V)(U)	21	3 EA.	COVER, CLAMP END PROT 1/2"L X.035"X.30"RED	0830976	
(V)(U)	22	2 EA.	FITTING, BRASS 1/4" x 3/8" BARB	1043397	
(V)	23	2 EA.	SCREW, MACHINE #14 x 1.5" PPH	1008697	
(V)	24	2 EA.	WASHER, FLAT #1/4" SC	1260769	
(V)(U)	25	1 EA.	FILTER, IN-LINE FUEL/WATER SEPARATE	1033695	
	26	2 FT.	HOSE, CONDUIT/SPLIT 1.5" FLAME RETA	1501857	
	27	2 FT.	HOSE, CONDUIT/SPLIT 3/4" FLAME RETA	1501824	
	28	8 EA.	CLIP, SUPPORT 1" DIA	1216720	
(U)	29	1 EA.	SUPPORT, PLAS RIGGING WHT. 5'	1043587	
(W)	30	1 EA.	DECK PLATE, GAS CHR W/VENT (SHIM ONLY)	1098615	