

THIS DOCUMENT IS THE PROPERTY OF BOSTON WHALER, INC. MFG. DEPT., EDGEWATER, FLORIDA. ALL RIGHTS ARE RESERVED. THIS DOCUMENT AND INFORMATION CONTAINED MUST NOT BE COPIED OR DISCLOSED TO OTHERS WITHOUT WRITTEN PERMISSION OF BOSTON WHALER, INC.

DWG. NO:
10501

REV.
1

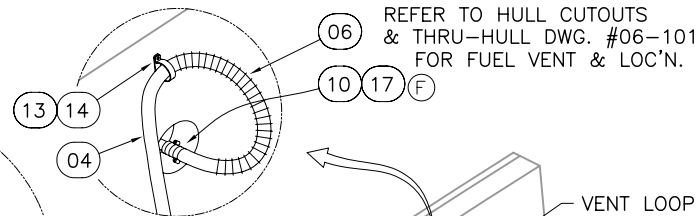
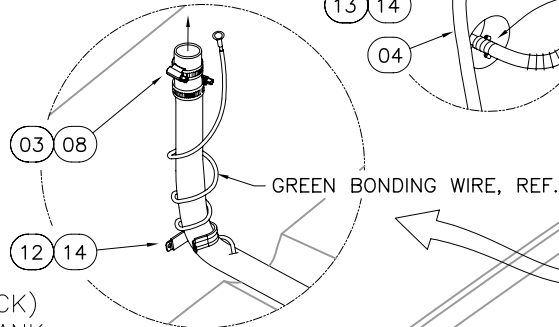
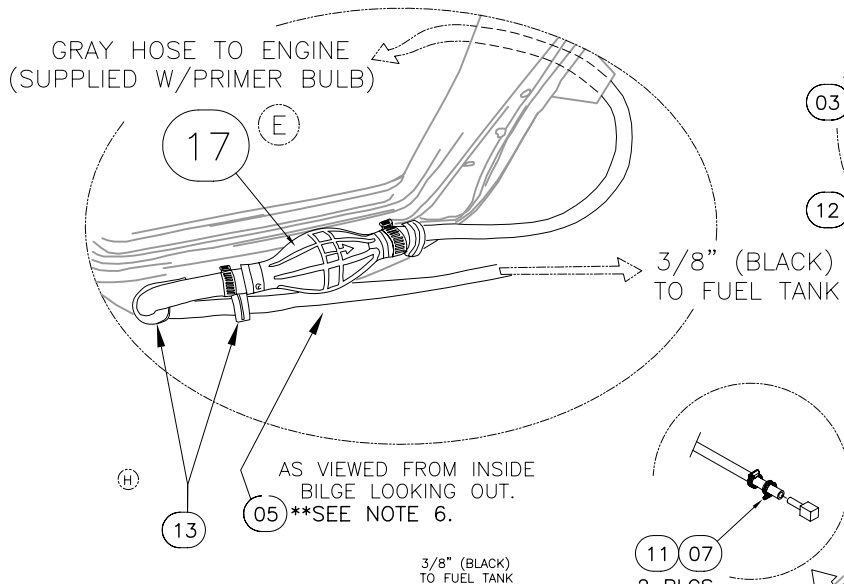
CURRENT ECD
051227

NOTE: DO NOT SECURE ANY OTHER ITEMS TO THE FUEL FEED HOSES.

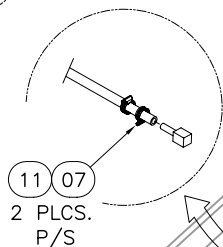
REFER TO DWGS. 06-201 & 06-202 FOR FUEL FILL, MTG. LOCATION & FASTENERS.

Ⓒ DELETE ITEM #17
W/OPT: 020-70272

GRAY HOSE TO ENGINE
(SUPPLIED W/PRIMER BULB)



TWIST AS SHOWN, 15
PRIOR TO INSTALLATION.
PRESS BETWEEN STRINGER
AND TANK SIDE, FLUSH
W/ TANK TOP, P/S.



4 PLCS. 02
12 PLCS. 18 19

SECURE GREEN BONDING WIRE TO TANK TAB & SENDER USING MACHINE SCREW & LOCKNUT.

PARTS LIST

ITEM	QTY.	U/M	DESCRIPTION	B.W.I. NO.
Ⓒ 01	1	EA.	TANK, FUEL - BW 200GAL 2700R-05	1777730
Ⓔ Ⓐ Ⓑ 02	16	FT.	TAPE, FOAM NEOPRENE W/3M 9828 3/8"TH X 2"W	1497452
03	0	FT.	HOSE, FUEL 1.5" TYPE A CLASS 2	0123745
Ⓘ 04	0	FT.	HOSE, FUEL 5/8" TYPE A CLASS 1 ISO/CE	123778
** Ⓘ 05	0	FT.	HOSE, FUEL 3/8" TYPE A CLASS 1 ISO/CE	123760
06	1	EA.	SPRING, VENT 1.05" x 12" SS	1041367
07	4	EA.	COVER, CLAMP END PROT 1/2"L x .020" x .592 RED	1116870
Ⓕ 08	4	EA.	COVER, CLAMP END PROT 1/2"L x .035" x .30" RED	0830976
09	4	EA.	CLAMP, HOSE #24 1"-2" SS .505	0256693
Ⓕ 10	3	EA.	CLAMP, HOSE #12 1/2"-1.25" SS .505	0256677
11	4	EA.	CLAMP, HOSE #06M 5/16"-7/8" SS MINI	0123398
12	2	EA.	CLIP, SUPPORT 2.25"DIA	1040344
13	7	EA.	CLIP, SUPPORT 1"DIA	1216720
14	9	EA.	SCREW, TAPPING #8A X 5/8" PTH SC	1010925
15	12	FT.	FOAM, BACKER ROD 7/8"DIA	1041698
Ⓔ 16	12	EA.	SCREW, TAPPING #14A X 1.5" PTH SC	1010909
Ⓔ 17	2	EA.	PRIMER BULB, W/FUEL LINE	1477900
Ⓔ 18	16	EA.	BOLT, LAG 3/8" X 1.5" SS HEX HD	1009703
Ⓔ 19	12	EA.	WASHER, LOCK/SPLIT 3/8" SC	1260603
Ⓔ 20	4	EA.	BRACKET, BW-97 ALUM 1/4" X 2" X 2" X 12"	1030428
Ⓕ 21	3	EA.	COVER, CLAMP END PRT 1/2" X .045 RED	0830968

** SEE NOTE 6.



INTERPRET DIMENSIONS AND TOLERANCES PER ANSI Y 14.5 UNLESS OTHERWISE SPECIFIED DIMENSIONS ARE IN INCHES.
 TOLERANCES: ANGLES = ± .5° .XXX = ± .010
 .X = ± .1 X = ± 1/16
 .XX = ± .03 X = ± 1/16
 DO NOT SCALE DRAWING

DRAWN: HAL READ

DATE: 08/30/01

SCALE: NONE

BOAT MODEL

MOLD NO.

2700R

DWG. TITLE:

FUEL SYSTEM INSTALLATION

INIT. REL. ECN NO:

DWG. NO:

SHT. NO.

010624

10501

3 of 3