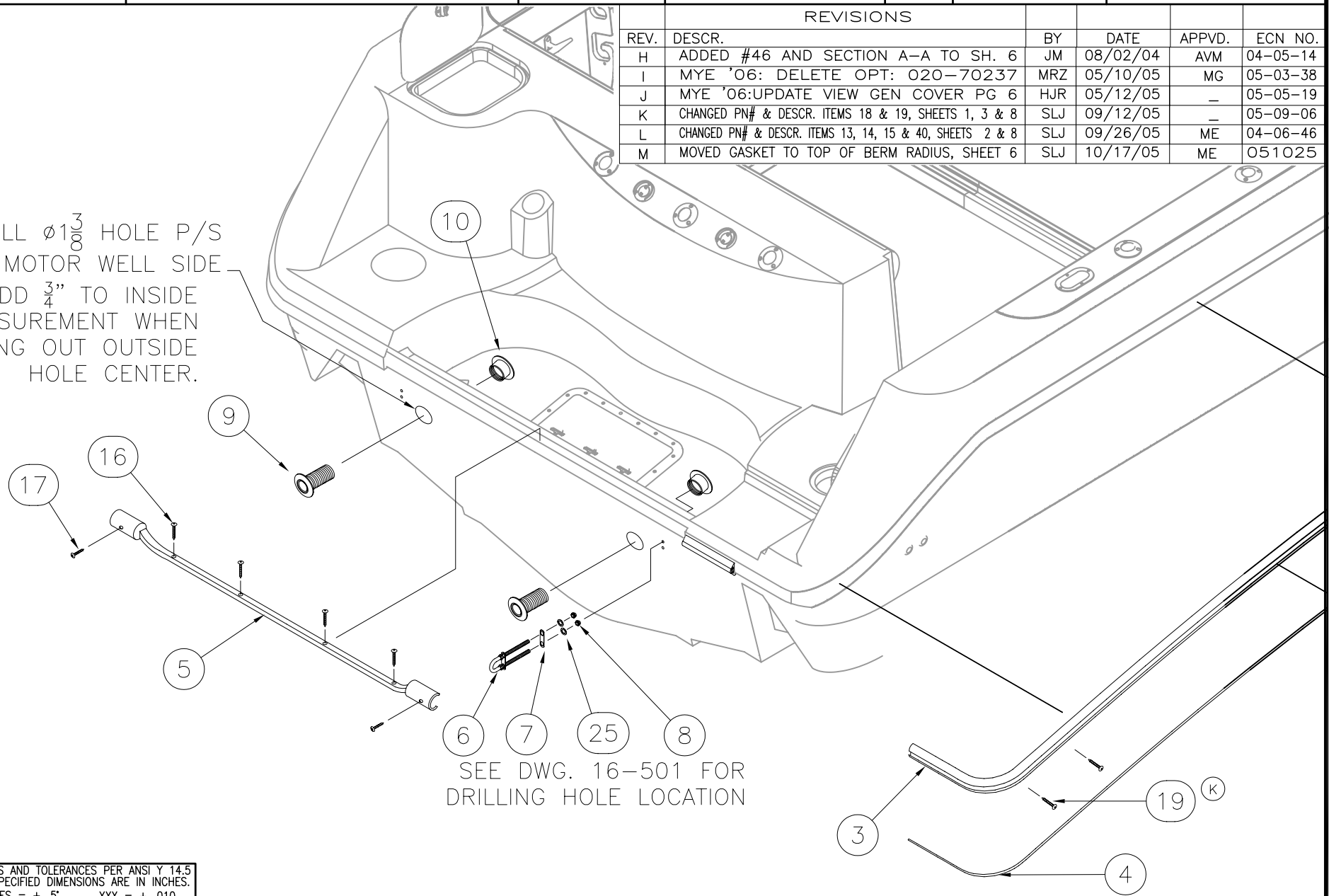


THIS DOCUMENT IS THE PROPERTY OF BOSTON WHALER, INC. MFG. DEPT., EDGEWATER, FLORIDA. ALL RIGHTS ARE RESERVED. THIS DOCUMENT AND INFORMATION CONTAINED MUST NOT BE COPIED OR DISCLOSED TO OTHERS WITHOUT WRITTEN PERMISSION OF BOSTON WHALER, INC.

| | | |
|----------|------|-------------|
| DWG. NO: | REV. | CURRENT ECD |
| 11201 | M | 050125 |

| REVISIONS | | | | | |
|-----------|----------------------------------------------------------|-----|----------|--------|----------|
| REV. | DESCR. | BY | DATE | APPVD. | ECN NO. |
| H | ADDED #46 AND SECTION A-A TO SH. 6 | JM | 08/02/04 | AVM | 04-05-14 |
| I | MYE '06: DELETE OPT: 020-70237 | MRZ | 05/10/05 | MG | 05-03-38 |
| J | MYE '06: UPDATE VIEW GEN COVER PG 6 | HJR | 05/12/05 | - | 05-05-19 |
| K | CHANGED PN# & DESCR. ITEMS 18 & 19, SHEETS 1, 3 & 8 | SLJ | 09/12/05 | - | 05-09-06 |
| L | CHANGED PN# & DESCR. ITEMS 13, 14, 15 & 40, SHEETS 2 & 8 | SLJ | 09/26/05 | ME | 04-06-46 |
| M | MOVED GASKET TO TOP OF BERM RADIUS, SHEET 6 | SLJ | 10/17/05 | ME | 051025 |

DRILL $\phi 1\frac{3}{8}$ HOLE P/S FROM MOTOR WELL SIDE
 ADD $\frac{3}{4}$ " TO INSIDE MEASUREMENT WHEN LAYING OUT OUTSIDE HOLE CENTER.



SEE DWG. 16-501 FOR DRILLING HOLE LOCATION

INSTALL ON 6" CENTERS

INTERPRET DIMENSIONS AND TOLERANCES PER ANSI Y 14.5 UNLESS OTHERWISE SPECIFIED DIMENSIONS ARE IN INCHES.
 TOLERANCES: ANGLES = $\pm .5^\circ$.XXX = $\pm .010$
 .X = $\pm .1$ $\frac{X}{X}$ = $\pm 1/16$
 .XX = $\pm .03$
 DO NOT SCALE DRAWING



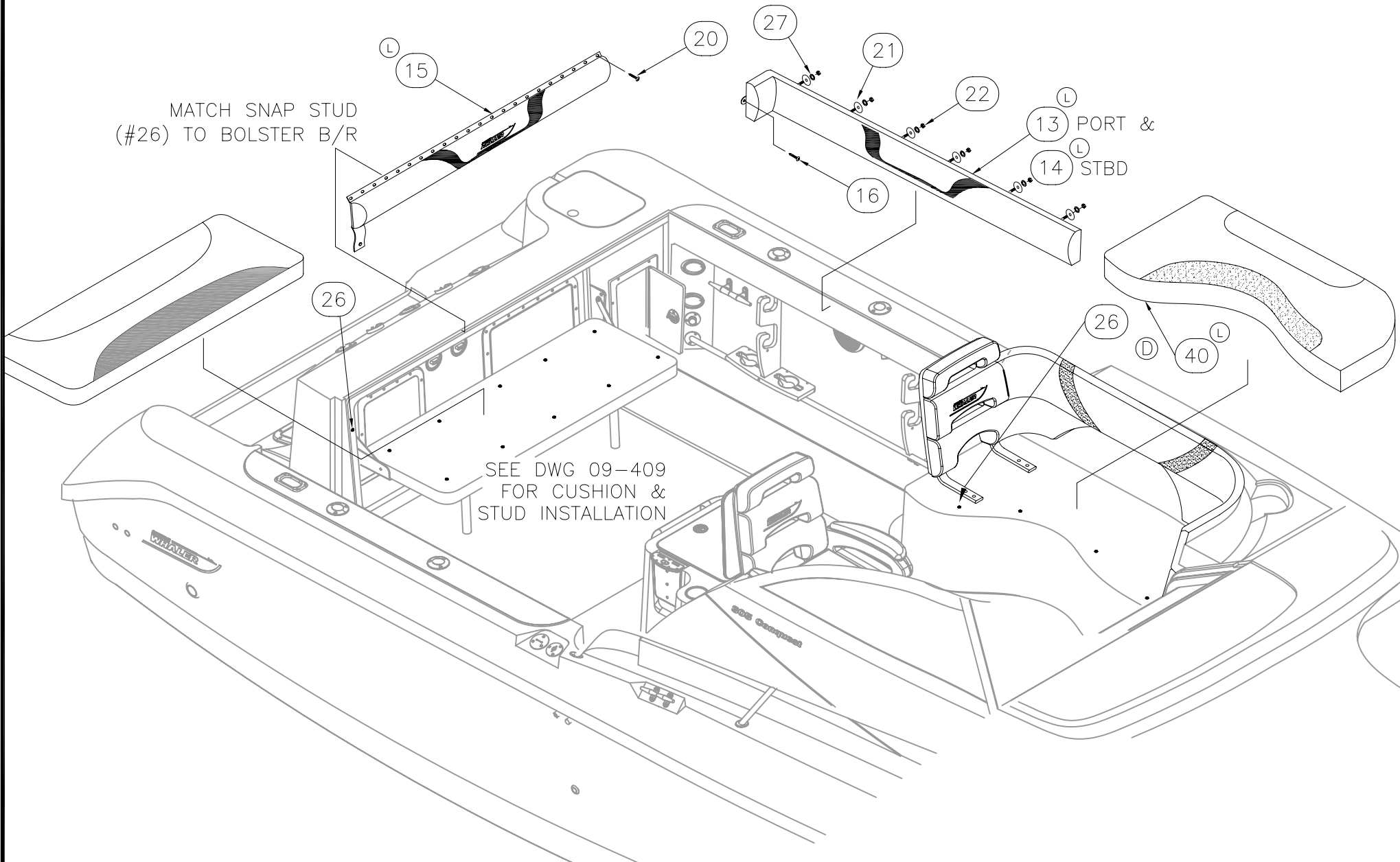
| | | | | | | |
|---------------------|----------------|-----------------|----------------|-------------|--------------------|----------|
| CHECKED: RA | DATE: 08/20/03 | DRAWN: R CRAVEN | DATE: 08/12/03 | SCALE: NONE | BOAT MODEL | MOLD NO. |
| APPD: KR | DATE: 08/20/03 | DWG. TITLE: | | 305CQ | | |
| DESIGN: L. SCHOLZ | DATE: 08/20/03 | FINAL ASSEMBLY | | | INIT. REL. ECN NO: | DWG. NO: |
| INT. ENG: M. GATICA | DATE: 10/31/03 | | | | 030309 | 11201 |
| | | | | | SHT. NO. | |
| | | | | | 1 | of 8 |

THIS DOCUMENT IS THE PROPERTY OF BOSTON WHALER, INC. MFG. DEPT., EDGEWATER, FLORIDA. ALL RIGHTS ARE RESERVED. THIS DOCUMENT AND INFORMATION CONTAINED MUST NOT BE COPIED OR DISCLOSED TO OTHERS WITHOUT WRITTEN PERMISSION OF BOSTON WHALER, INC.

DWG. NO:
11201

REV.
M

CURRENT ECD
050125



INTERPRET DIMENSIONS AND TOLERANCES PER ANSI Y 14.5 UNLESS OTHERWISE SPECIFIED DIMENSIONS ARE IN INCHES.
 TOLERANCES: ANGLES = ± .5° .XXX = ± .010
 .X = ± .1 X = ± 1/16
 .XX = ± .03 X = ± 1/16
 DO NOT SCALE DRAWING

DRAWN: R CRAVEN DATE: 08/12/03 SCALE: NONE
 DWG. TITLE: FINAL ASSEMBLY

BOAT MODEL 305CQ
 INIT. REL. ECN NO: 030309

MOLD NO.
 DWG. NO: 11201

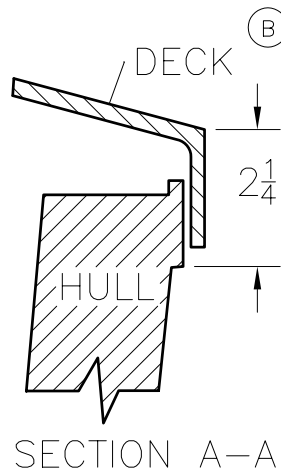
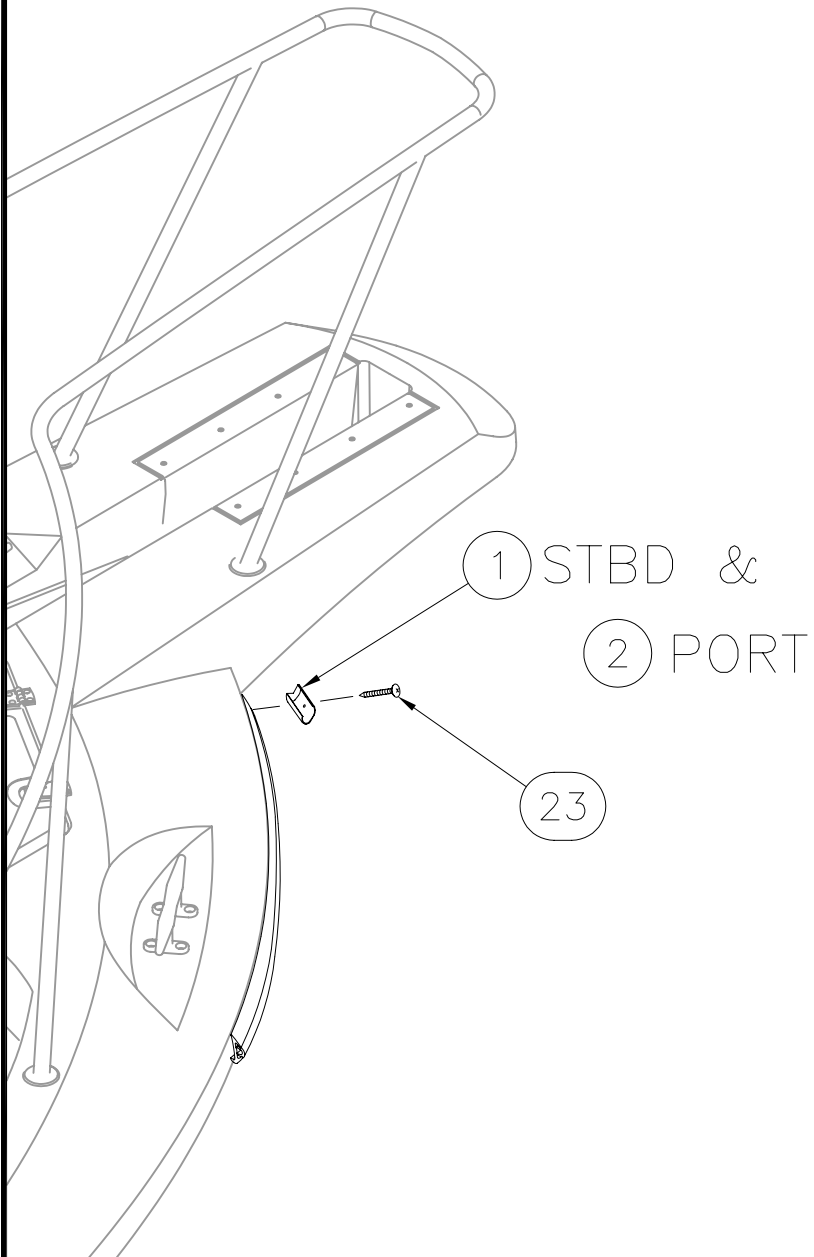
SHT. NO. 2 OF 8

THIS DOCUMENT IS THE PROPERTY OF BOSTON WHALER, INC. MFG. DEPT., EDGEWATER, FLORIDA. ALL RIGHTS ARE RESERVED. THIS DOCUMENT AND INFORMATION CONTAINED MUST NOT BE COPIED OR DISCLOSED TO OTHERS WITHOUT WRITTEN PERMISSION OF BOSTON WHALER, INC.

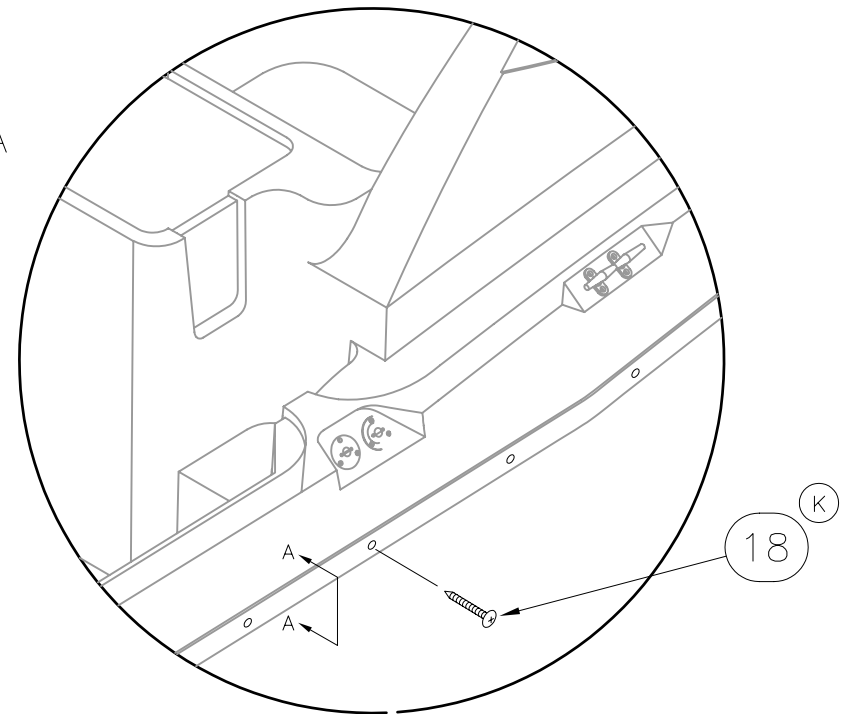
DWG. NO:
11201

REV.
M

CURRENT ECD
050125



FASTENING HEIGHT
OF DECK TO HULL
AT KNUCKLE-P/S,



DRILL #5 ϕ AND COUNTER SINK 6"
O.C. 1/2" UP FROM BOTTOM OF DECK
FLANGE, CAULK SEAM W/MARINE SEALANT

BOSTON WHALER
PRODUCT DEV. & MFG. ENGINEERING GROUP

INTERPRET DIMENSIONS AND TOLERANCES PER ANSI Y 14.5
UNLESS OTHERWISE SPECIFIED DIMENSIONS ARE IN INCHES.
TOLERANCES: ANGLES = $\pm .5^\circ$.XXX = $\pm .010$
.X = $\pm .1$ X = $\pm 1/16$
.XX = $\pm .03$
DO NOT SCALE DRAWING

DRAWN: R CRAVEN

DATE: 08/12/03

SCALE: NONE

BOAT MODEL

MOLD NO.

DWG. TITLE:

FINAL ASSEMBLY

305CQ

INIT. REL. ECN NO:

030309

DWG. NO:

11201

SHT. NO.

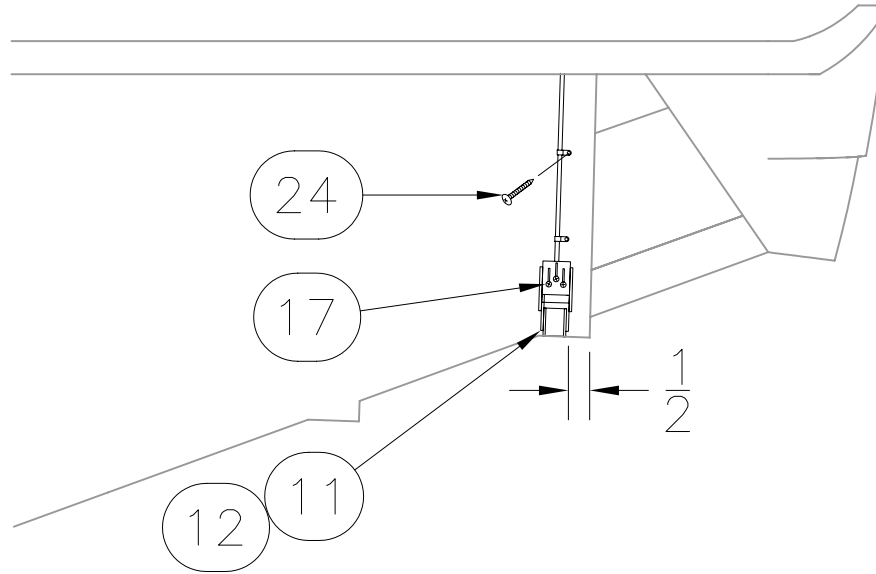
3 OF 8

THIS DOCUMENT IS THE PROPERTY OF BOSTON WHALER, INC. MFG. DEPT.,
EDGEWATER, FLORIDA. ALL RIGHTS ARE RESERVED. THIS DOCUMENT AND
INFORMATION CONTAINED MUST NOT BE COPIED OR DISCLOSED TO OTHERS
WITHOUT WRITTEN PERMISSION OF BOSTON WHALER, INC.

DWG. NO:
11201

REV.
M

CURRENT ECD
050125



STD. & OPT:100-70017
 DEL. w/OPTS:~~020-70239~~ ①
 020-70405
 020-79999



INTERPRET DIMENSIONS AND TOLERANCES PER ANSI Y 14.5
 UNLESS OTHERWISE SPECIFIED DIMENSIONS ARE IN INCHES.
 TOLERANCES: ANGLES = ± .5° .XXX = ± .010
 .X = ± .1 X = ± 1/16
 .XX = ± .03

DO NOT SCALE DRAWING

DRAWN: R CRAVEN

DATE:08/12/03

SCALE: NONE

BOAT MODEL

MOLD NO.

305CQ

DWG. TITLE:

FINAL ASSEMBLY

INIT. REL. ECN NO:

DWG. NO:

SHT. NO.

030309

11201

4 OF 8

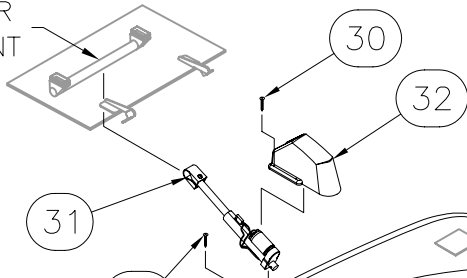
THIS DOCUMENT IS THE PROPERTY OF BOSTON WHALER, INC. MFG. DEPT., EDGEWATER, FLORIDA. ALL RIGHTS ARE RESERVED. THIS DOCUMENT AND INFORMATION CONTAINED MUST NOT BE COPIED OR DISCLOSED TO OTHERS WITHOUT WRITTEN PERMISSION OF BOSTON WHALER, INC.

DWG. NO:
11201

REV.
M

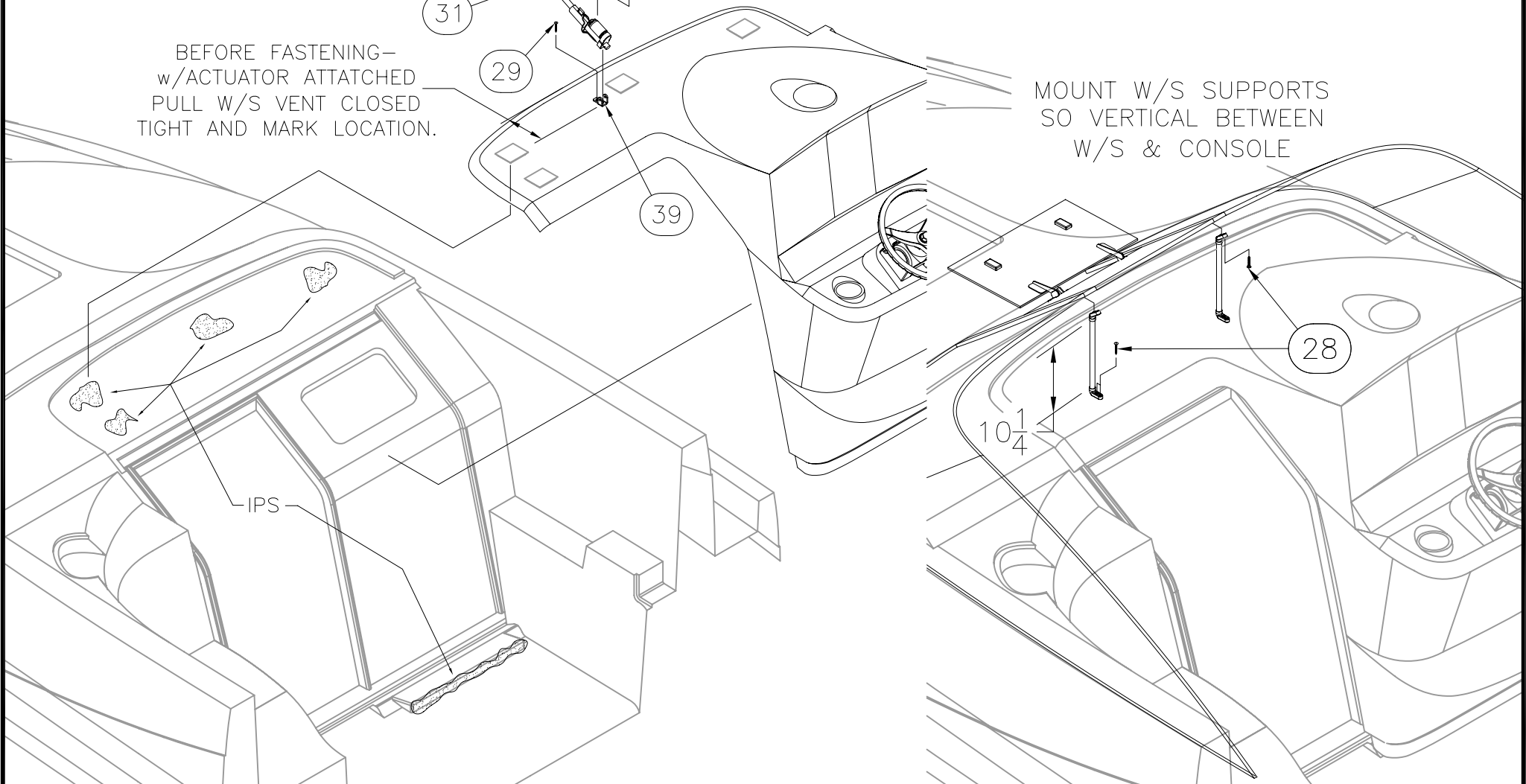
CURRENT ECD
050125

CENTER ACTUATOR
ARM ON W/S VENT



BEFORE FASTENING—
w/ACTUATOR ATTACHED
PULL W/S VENT CLOSED
TIGHT AND MARK LOCATION.

MOUNT W/S SUPPORTS
SO VERTICAL BETWEEN
W/S & CONSOLE



INTERPRET DIMENSIONS AND TOLERANCES PER ANSI Y 14.5 UNLESS OTHERWISE SPECIFIED DIMENSIONS ARE IN INCHES.
TOLERANCES: ANGLES = ± .5° .XXX = ± .010
.X = ± .1 .XX = ± .03 X = ± 1/16
DO NOT SCALE DRAWING

DRAWN: R CRAVEN

DATE: 08/12/03

SCALE: NONE

BOAT MODEL

MOLD NO.

305CQ

DWG. TITLE:

FINAL ASSEMBLY

INIT. REL. ECN NO:

DWG. NO:

SHT. NO.

030309

11201

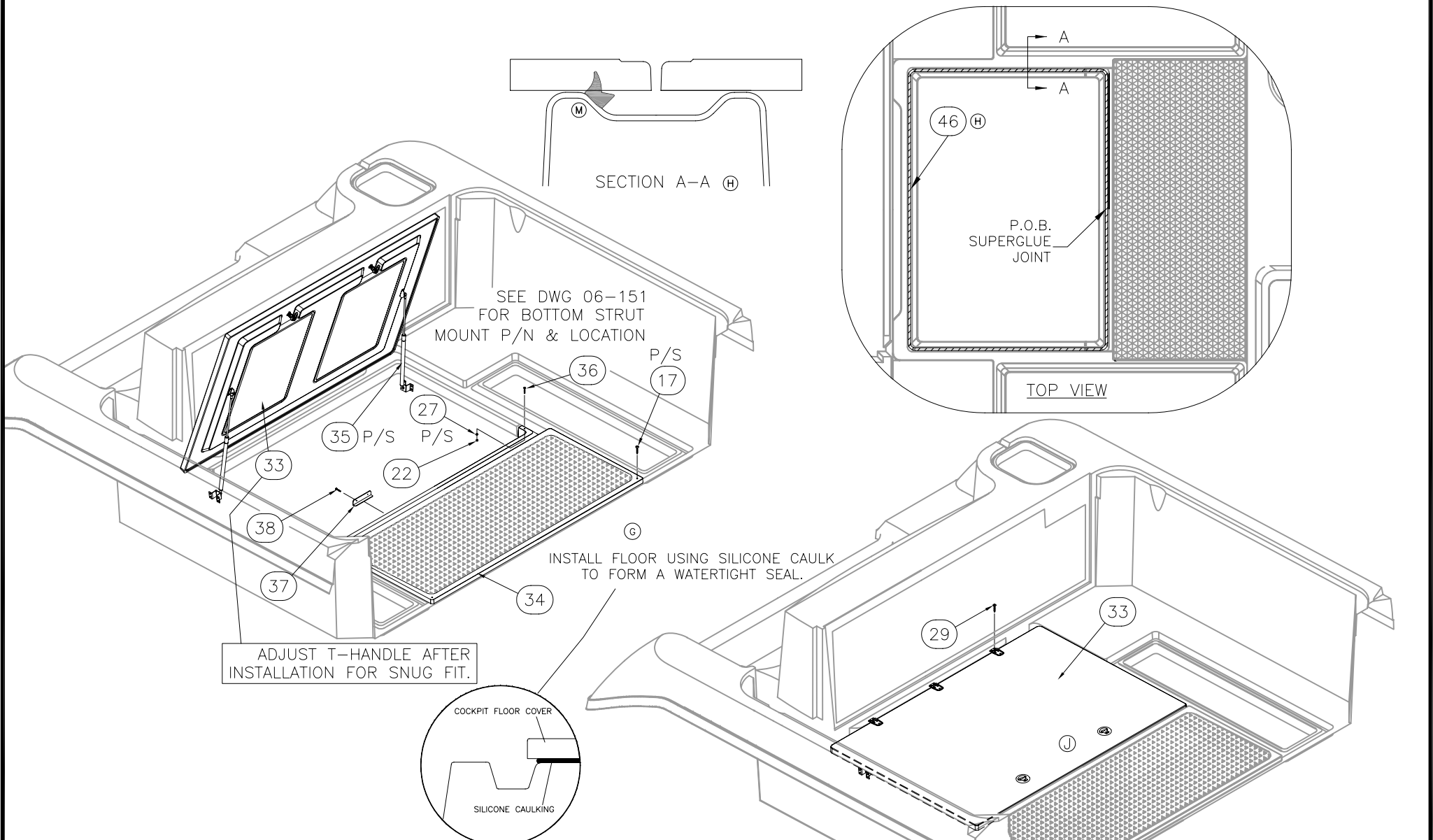
5 OF 8

THIS DOCUMENT IS THE PROPERTY OF BOSTON WHALER, INC. MFG. DEPT., EDGEWATER, FLORIDA. ALL RIGHTS ARE RESERVED. THIS DOCUMENT AND INFORMATION CONTAINED MUST NOT BE COPIED OR DISCLOSED TO OTHERS WITHOUT WRITTEN PERMISSION OF BOSTON WHALER, INC.

DWG. NO:
11201

REV.
M

CURRENT ECD
050125



INTERPRET DIMENSIONS AND TOLERANCES PER ANSI Y 14.5 UNLESS OTHERWISE SPECIFIED DIMENSIONS ARE IN INCHES.
 TOLERANCES: ANGLES = ± .5° .XXX = ± .010
 .X = ± .1 X = ± 1/16
 .XX = ± .03
 DO NOT SCALE DRAWING

DRAWN: R CRAVEN DATE: 08/12/03 SCALE: NONE
 DWG. TITLE: FINAL ASSEMBLY

BOAT MODEL
305CQ
 INIT. REL. ECN NO:
030309

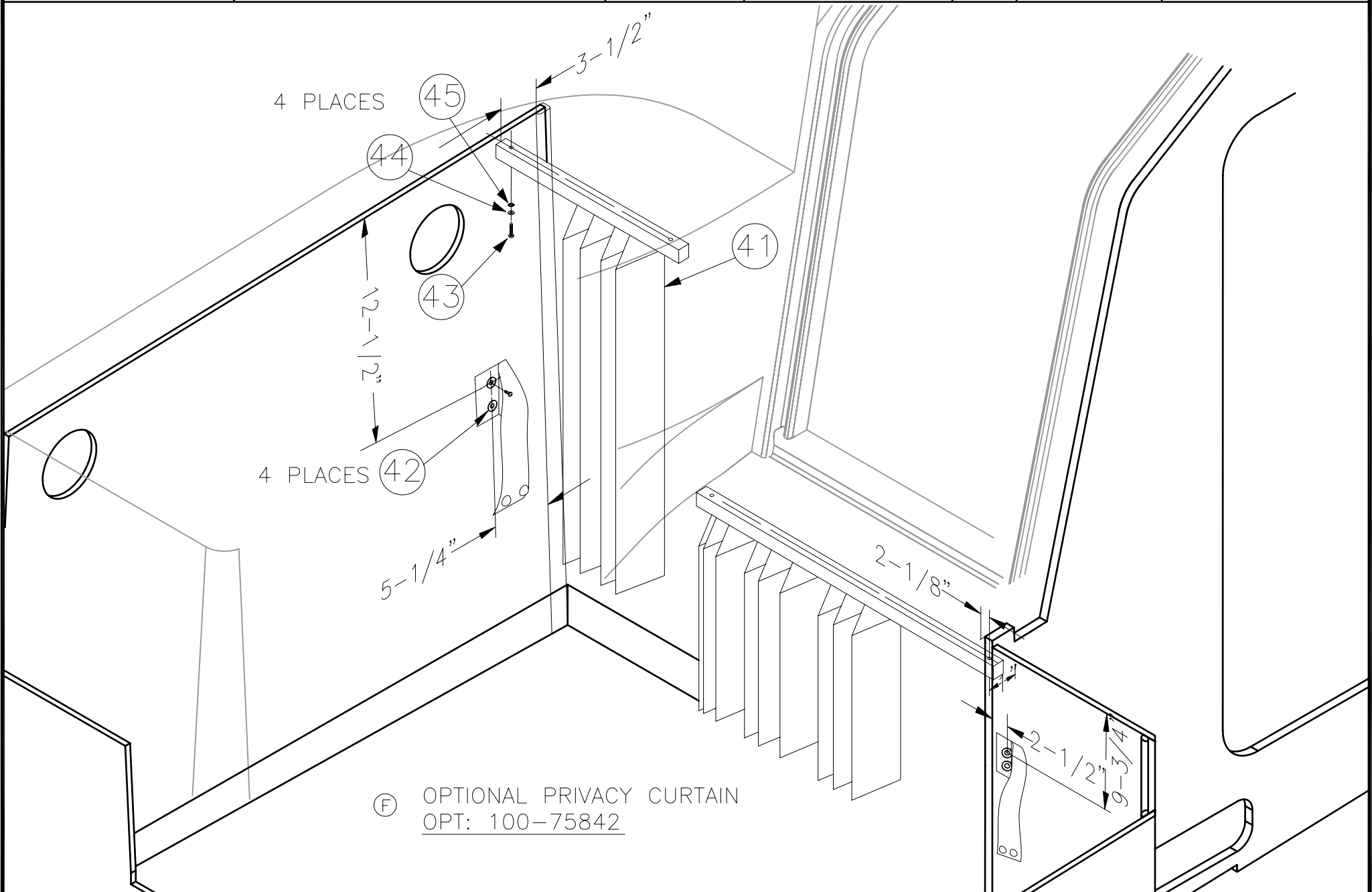
MOLD NO.
 DWG. NO:
11201
 SHT. NO.
6 OF 8

THIS DOCUMENT IS THE PROPERTY OF BOSTON WHALER, INC. MFG. DEPT., EDGEWATER, FLORIDA. ALL RIGHTS ARE RESERVED. THIS DOCUMENT AND INFORMATION CONTAINED MUST NOT BE COPIED OR DISCLOSED TO OTHERS WITHOUT WRITTEN PERMISSION OF BOSTON WHALER, INC.

DWG. NO:
11201

REV.
M

CURRENT ECD
050125



(F) OPTIONAL PRIVACY CURTAIN
OPT: 100-75842



INTERPRET DIMENSIONS AND TOLERANCES PER ANSI Y 14.5 UNLESS OTHERWISE SPECIFIED DIMENSIONS ARE IN INCHES.
TOLERANCES: ANGLES = ± .5° .XXX = ± .010
.X = ± .1 X = ± 1/16
.XX = ± .03 X = ± 1/16
DO NOT SCALE DRAWING

DRAWN: R CRAVEN

DATE: 08/12/03

SCALE: NONE

BOAT MODEL

MOLD NO.

305CQ

DWG. TITLE:

FINAL ASSEMBLY

INIT. REL. ECN NO:

DWG. NO:

SHT. NO.

030309


11201

7 OF 8

THIS DOCUMENT IS THE PROPERTY OF BOSTON WHALER, INC. MFG. DEPT.
 EDGEWATER, FLORIDA. ALL RIGHTS ARE RESERVED. THIS DOCUMENT AND
 INFORMATION CONTAINED MUST NOT BE COPIED OR DISCLOSED TO OTHERS
 WITHOUT WRITTEN PERMISSION OF BOSTON WHALER, INC.

DWG. NO. 11201
 REV. M
 CURRENT ECO 050125

| Parts List | | | | |
|------------|-----|-----|-----------------------------------------------|------------|
| ITEM | QTY | U/M | DESCRIPTION | B.W.I. NO. |
| 1 | 1 | EA. | CAP, BW305CQ-04 RUB RAIL END STB SS | 1756355 |
| 2 | 1 | EA. | CAP, BW305CQ-04 RUB RAIL END PRT SS | 1757792 |
| 3 | 2 | EA. | RUBRAIL, PLASTIC CHAR 34.5' | 1758816 |
| 4 | 2 | EA. | INSERT, RUB RAIL CHAR FLEX 34.5' | 1758823 |
| 5 | 1 | EA. | CAP, BW305CQ-04 RUB RAIL TRNSM TRIM BLK | 1756354 |
| 6 | 2 | EA. | EYE, BOW 5/8"X 5.75" SS | 0995522 |
| 7 | 2 | EA. | PLATE, BW-97 B/U U-BOLT | 1058999 |
| 8 | 4 | EA. | NUT, ACORN #5/8-11 SC | 1062942 |
| 9 | 2 | EA. | THRU-HULL, PVC PRESS-FIT | 1042084 |
| 10 | 2 | EA. | NUT, PVC RETAINING THRU-HULL | 1042068 |
| 11 | 1 | EA. | ACC PART, MERC DEP FINDER/TRANSDUCER TRNS MNT | 1738329 |
| 12 | 1 | EA. | ACC PART, MERC SPEEDOMETER/TEMP DIG | 1477942 |
| Ⓒ 13 | 1 | EA. | BOLSTER, BW305CQ-05 CKPT PRT AFT | 1781898 |
| Ⓒ 14 | 1 | EA. | BOLSTER, BW305CQ-05 CKPT STB | 1781899 |
| Ⓒ 15 | 1 | EA. | CUSH, BW305CQ-05 STERN SEAT B/R | 1781904 |
| Ⓑ 16 | 7 | EA. | SCREW, TAPPING #10A X 1" PTH SC | 1008739 |
| Ⓑ 17 | 7 | EA. | SCREW, TAPPING #10A X 2" PTH SC | 1008754 |
| 18 | 125 | EA. | SCREW, TAPPING #10A X 1.25" PFH SC | 1259415 |
| 19 | 150 | EA. | SCREW, TAPPING #10A X 1.5" PFH SC | 1010248 |
| 20 | 32 | EA. | SCREW, TAPPING #8A X 3/4" PFH SC | 1008408 |
| 21 | 12 | EA. | WASHER, FENDER 1/4"X 1.25" SC | 1260678 |
| Ⓑ 22 | 14 | EA. | NUT, HEX #1/4-20 SC | 1260694 |
| 23 | 2 | EA. | SCREW, TAPPING #10A X 2" POH SC | 1261163 |
| 24 | 4 | EA. | SCREW, TAPPING #8A X 1" PTH SC | 1008804 |
| 25 | 4 | EA. | WASHER, LOCK/SPLIT 5/8" SC | 1259589 |
| Ⓓ 26 | 5 | EA. | SNAP STUD, W/#8 X 3/8" PH BR/NI/SS | 0203786 |
| Ⓑ 27 | 14 | EA. | WASHER, LOCK/SPLIT 1/4" SC | 1260595 |
| Ⓑ 28 | 8 | EA. | SCREW, TAPPING #8A X 3/4" PPH SC | 1010651 |
| Ⓒ 29 | 8 | EA. | SCREW, TAPPING #10A X 1" POH SC | 1008507 |
| 30 | 4 | EA. | SCREW, TAPPING #4A X 1" PPH SC | 1010636 |
| 31 | 1 | EA. | ACTUATOR, ELEC W/S VENT 4"8P CE | 1100262 |
| 32 | 1 | EA. | COVER, ABS W/S VENT ACTUATOR SEAFOAM | 1472166 |
| 33 | 1 | EA. | GENERATOR COVER SUB-ASSY | 09-435 |
| 34 | 1 | EA. | COCKPIT FLOOR COVER SUB-ASSY | 09-302 |
| 35 | 2 | EA. | CYLINDER, GAS SS 130PSI 26"EXT X 16"COMP | 1755451 |
| 36 | 2 | EA. | SCREW, MACHINE #1/4-20 X 2.25" PTH SC | 1051317 |
| 37 | 2 | EA. | FRAME, BW2100R-97 ANCHOR LCKR EDGE GUARD SS | 1034552 |
| 38 | 4 | EA. | SCREW, TAPPING #6A X 1/2" PPH SC | 1213081 |
| Ⓑ 39 | 1 | EA. | BRACKET, SS W/S ACTUATOR MNT #14-333 | 1483304 |
| Ⓒ 40 | 1 | EA. | CUSH, BW305CQ-05 PASS SEAT BASE | 1781901 |
| Ⓕ 41 | 1 | EA. | CURTAIN, BW305CQ-04 MIDBRTH PRIVACY | 1760129 |
| Ⓕ 42 | 4 | EA. | SNAP STUD, W/#8 X 3/8" PH BR/NI/SS | 203786 |
| Ⓕ 43 | 4 | EA. | SCREW, TAPPING #10A X 1.5" PPH SC | 1010610 |
| Ⓕ 44 | 4 | EA. | WASHER, FLAT #10 SC | 1260751 |
| Ⓕ 45 | 4 | EA. | WASHER, LOCK/SPLIT #10 SC | 1260645 |
| Ⓕ 46 | 17 | FT. | TRIM-SEAL, #X1058BT 3/4" X .625" SELF-ADH BLK | 1780862 |

| | | | | | |
|-------------------------------------------------------------------------------------------------------------------------------------------------|------------------------------------------------------------------------------------------------------------------------------------------------------------------------------------------------|-----------------------------------------------|-------------------------------|------------------------------------------------|-------------------|
|  BOSTON WHALER PRODUCT DEV. & MFG. ENGINEERING GROUP | INTERPRET DIMENSIONS AND TOLERANCES PER ANSI Y 14.5 UNLESS OTHERWISE SPECIFIED DIMENSIONS ARE IN INCHES. TOLERANCES: ANGLES = ± .5° .XXX = ± .010 .X = ± .1 .XX = ± .03 X = ± 1/16 | DRAWN: R CRAVEN DWG. TITLE: FINAL ASSEMBLY | DATE: 08/12/03 SCALE: NONE | BOAT MODEL: 305CQ INIT. REL. ECN NO: 030309 | MOLD NO. 11201 |
| | DO NOT SCALE DRAWING | | | | SHT. NO. 8 OF 8 |